

# ENGLAND'S ECONOMIC HEARTLAND

---

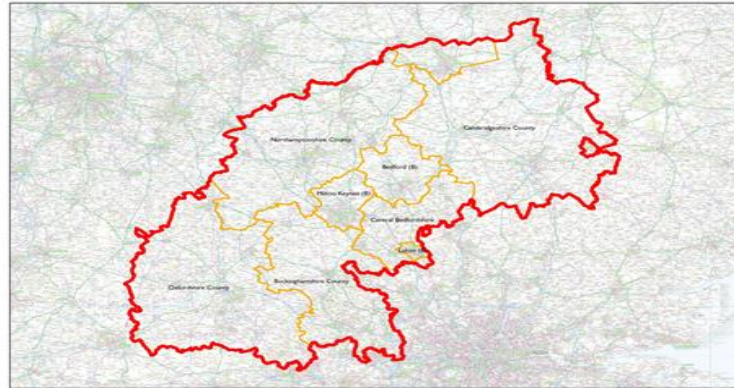
Martin Tugwell  
7<sup>th</sup> December 2016

[www.englandseconomicheartland.com](http://www.englandseconomicheartland.com)

# The Strategic Alliance

- 9 Local Transport Authorities

Oxfordshire County Council  
Buckinghamshire County Council  
Northamptonshire County Council  
Milton Keynes Council  
Bedford Borough Council  
Central Bedfordshire Council  
Luton Borough Council  
Cambridgeshire County Council  
Peterborough City Council



- 3 Local Enterprise Partnerships

Oxfordshire Local Enterprise Partnership  
Buckinghamshire Thames Valley Local Enterprise Partnership  
South East Midlands Local Enterprise Partnership (SEMLEP)

+ involving Greater Cambridge  
Greater Peterborough Local Enterprise Partnership

- Delivery Partners  
Skanska  
Ringway Jacobs  
Kier/WSP

## Collaborative working founded in mutual trust and confidence

# At the Heart of Technology Enabled Science and Innovation



# The Potential

*'The corridor connecting Cambridge, Milton Keynes and Oxford could be the UK's Silicon Valley – a world renowned centre for science, technology and innovation.'*

*'But its future success is not guaranteed'*

*'The Cambridge – Milton Keynes – Oxford corridor has a major role to play in the future of the UK economy.'*

*'With the exception of London, no other part of the country hosts such a powerful combination of:*

- World leading universities and research institutes*
- Globally competitive business clusters*
- Highly-skilled workers'*

**Potential to realise £85bn - £163bn  
additional GVA per annum**



ENGLAND'S  
ECONOMIC  
HEARTLAND

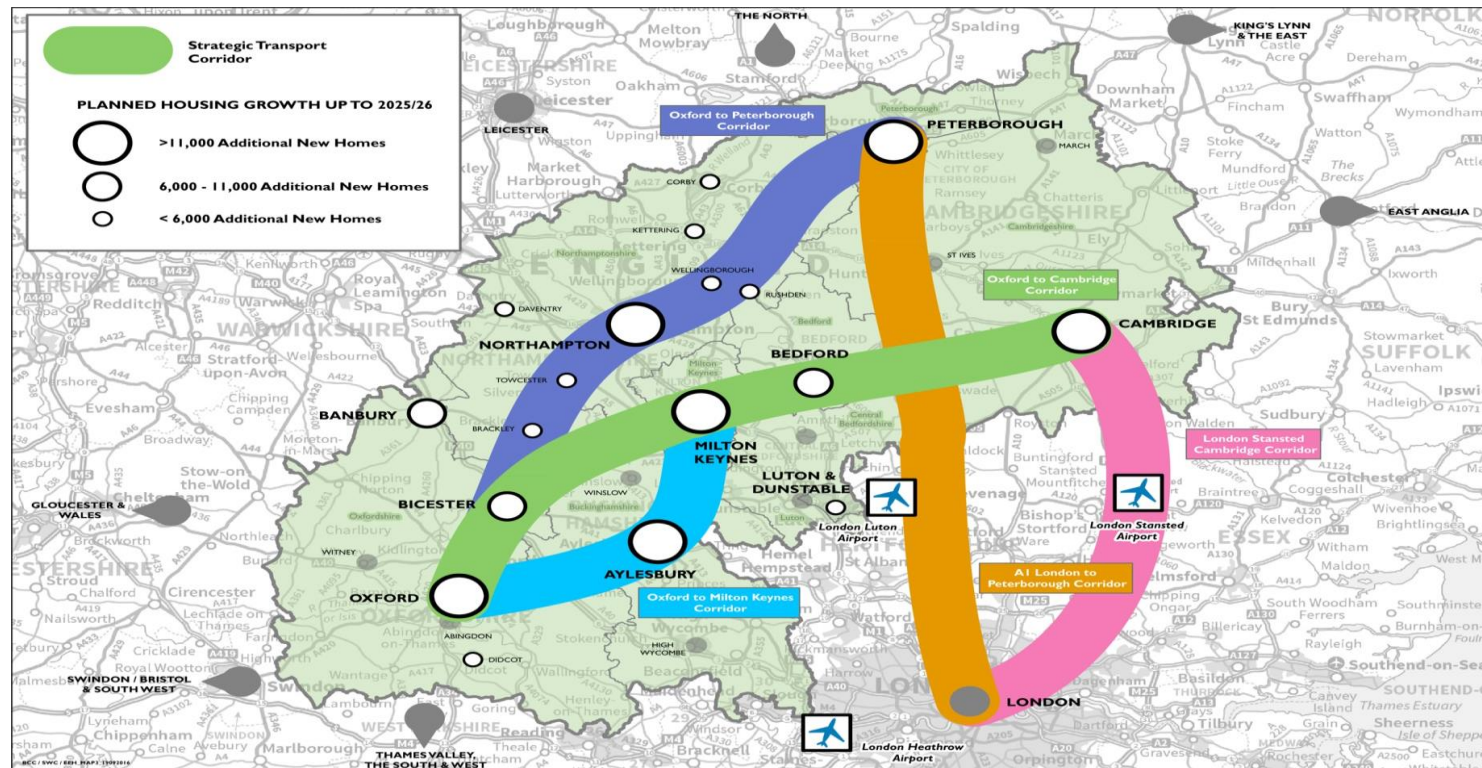
# PLANNING FOR GROWTH

A position statement from England's Economic Heartland's Transport Forum

[www.englandseconomicheartland.com](http://www.englandseconomicheartland.com)



# Connectivity – critical for the economy



# The Challenges Ahead

Strengthen the governance across the Heartland area:

- integrating planning and infrastructure decisions
- driving delivery to maximise benefits of infrastructure investment

Realising the 'once-in-a generation' opportunity afforded by the creation of multi-modal spine

Ensuring infrastructure and development are integrated into local environment

Delivering measures to improve local connectivity

Putting in place funding and financing mechanisms to unblock barriers to delivery



# ENGLAND'S ECONOMIC HEARTLAND

---

Thank You

Martin Tugwell, Programme Director - 01296 387124  
englandseconomicheartland@buckscc.gov.uk  
[www.englandseconomicheartland.com](http://www.englandseconomicheartland.com)