

**LIVERPOOL**  
**CITY REGION**  
COMBINED AUTHORITY

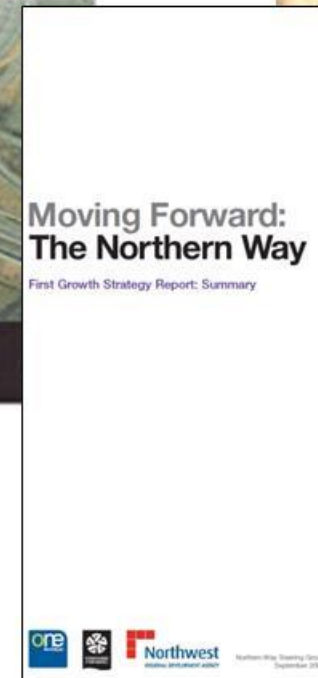
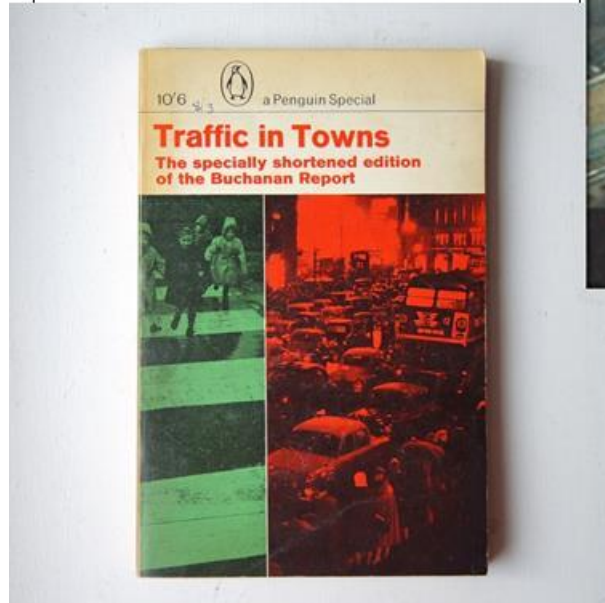
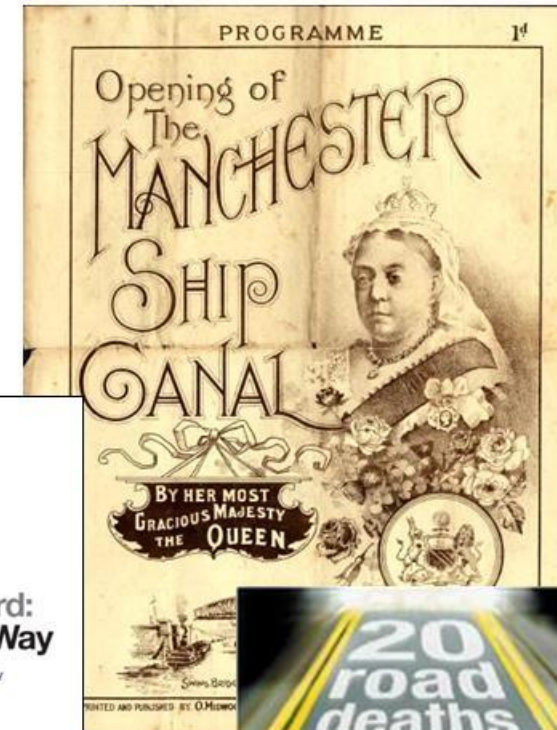
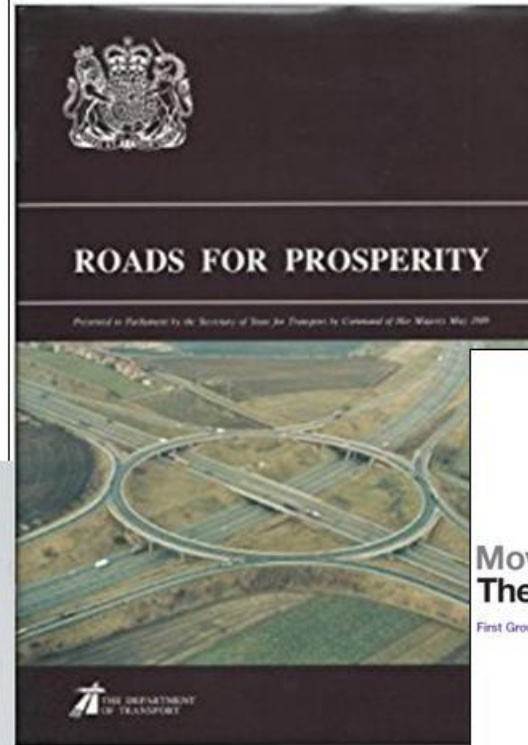
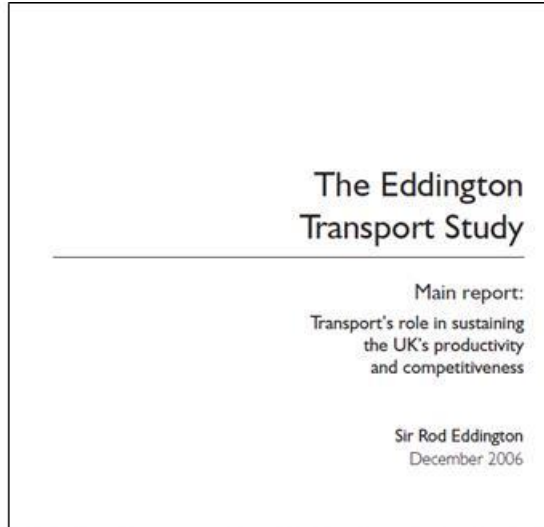
**Session 4:**  
**How Transport can make a difference to the**  
**Economy across the North of England and**  
**across City Region Level**

**Cllr Liam Robinson**  
**Liverpool City Region Portfolio Member for Transport &**  
**Chair of Transport Committee**



**LIVERPOOL  
CITY REGION**  
COMBINED AUTHORITY

# Links between Transport and the Economy-A Long History





# The Challenges

- A persistent economic gap between the North and national average
- In 2014, the gap equated to
  - £4,800 per person difference in income between North & UK avg
  - £22,500 per person difference between the North and London

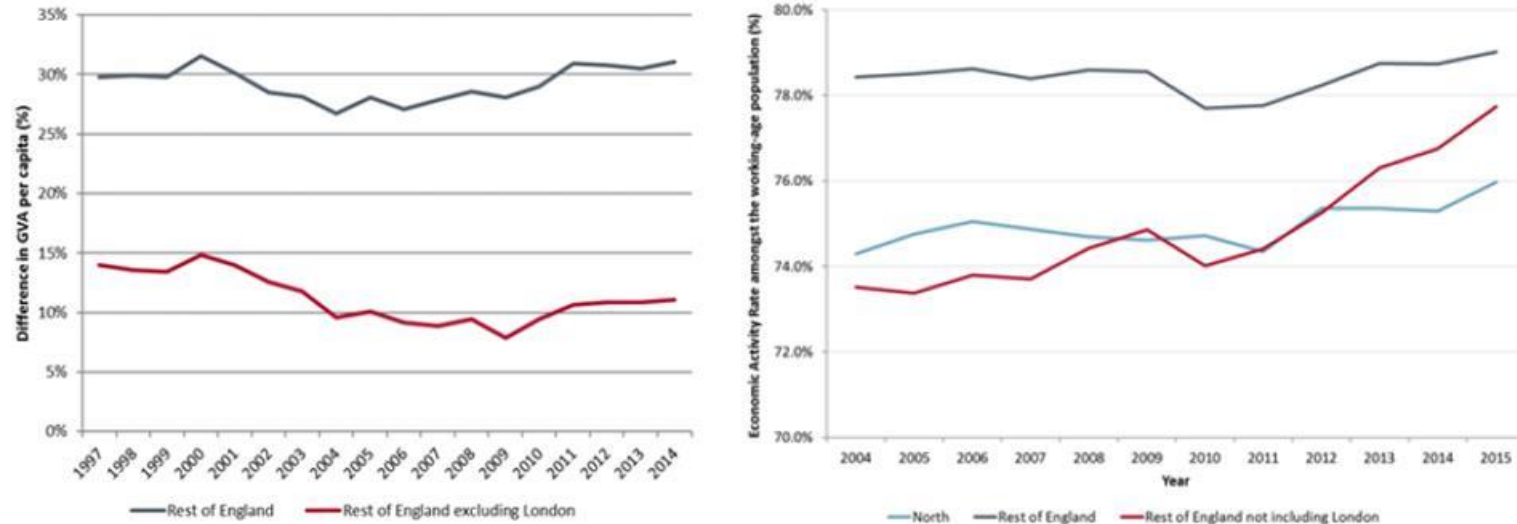


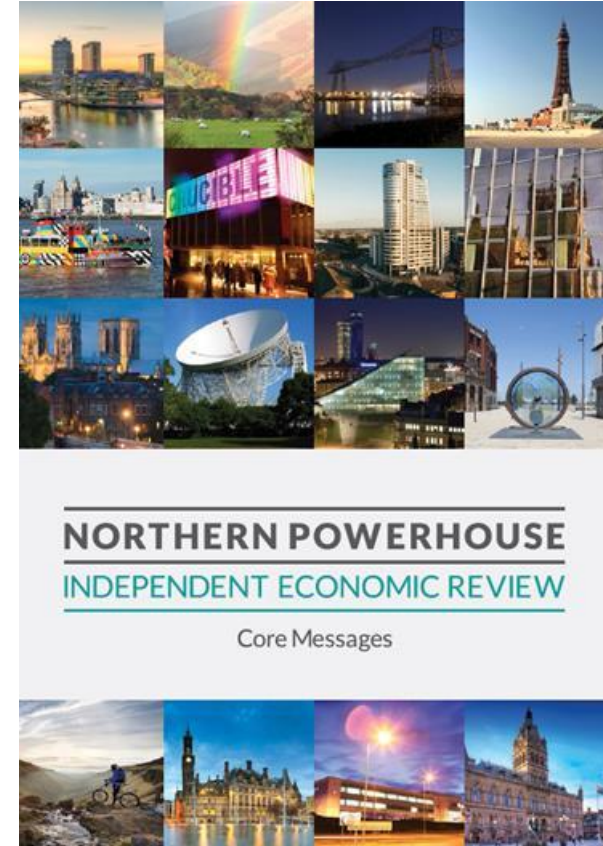
Figure 2.1: The North's Prosperity Gap (in GVA per capita) with the Rest of the UK. Data Source: Regional Gross Value Added Statistics, Office for National Statistics



**LIVERPOOL  
CITY REGION**  
COMBINED AUTHORITY

# The Potential

- By 2050, a transformed North could see a 4% increase in productivity, equating to increase in GVA of almost £100 bn, and up to 850,000 new jobs
- Improved economic performance led by growth in the North's offer of 'prime' capabilities, supported by 'enabling' capabilities
- **Enhanced transport connectivity is critical to support this, both between and within cities**
- Support agglomeration effects arising from faster connections between areas of employment
- Also need substantial improvements in skills base and graduate retention, alongside innovation and inward investment



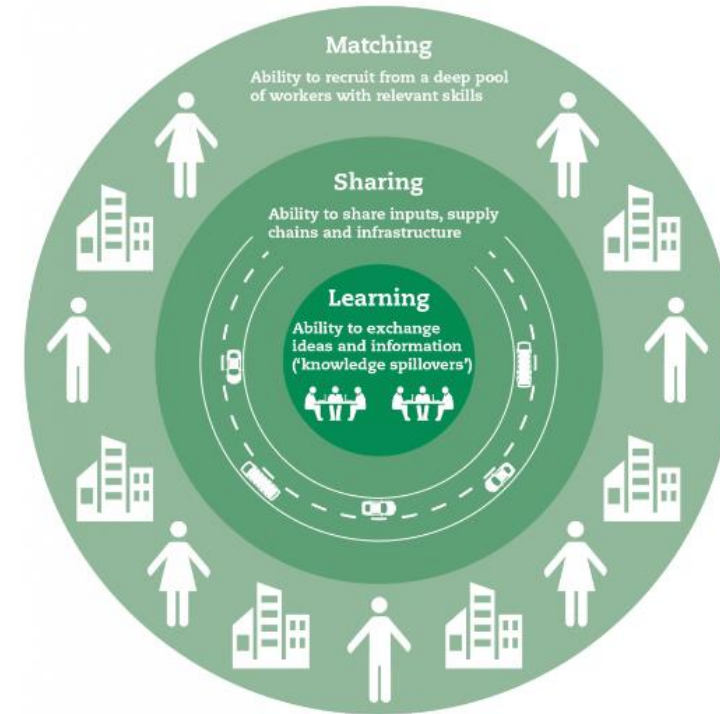


**LIVERPOOL  
CITY REGION**  
COMBINED AUTHORITY

# Transport and Economy - Agglomeration Benefits

- Currently fewer than 10,000 people in the North can access four or more of the North's largest economic centres within an hour.
- This would rise to 1.3 million once NPR is delivered.
- NPR would transform job market, giving businesses access to skilled workers in larger labour markets and offering individuals the opportunity for flexible career development and progression

Figure 1: The benefits of agglomeration



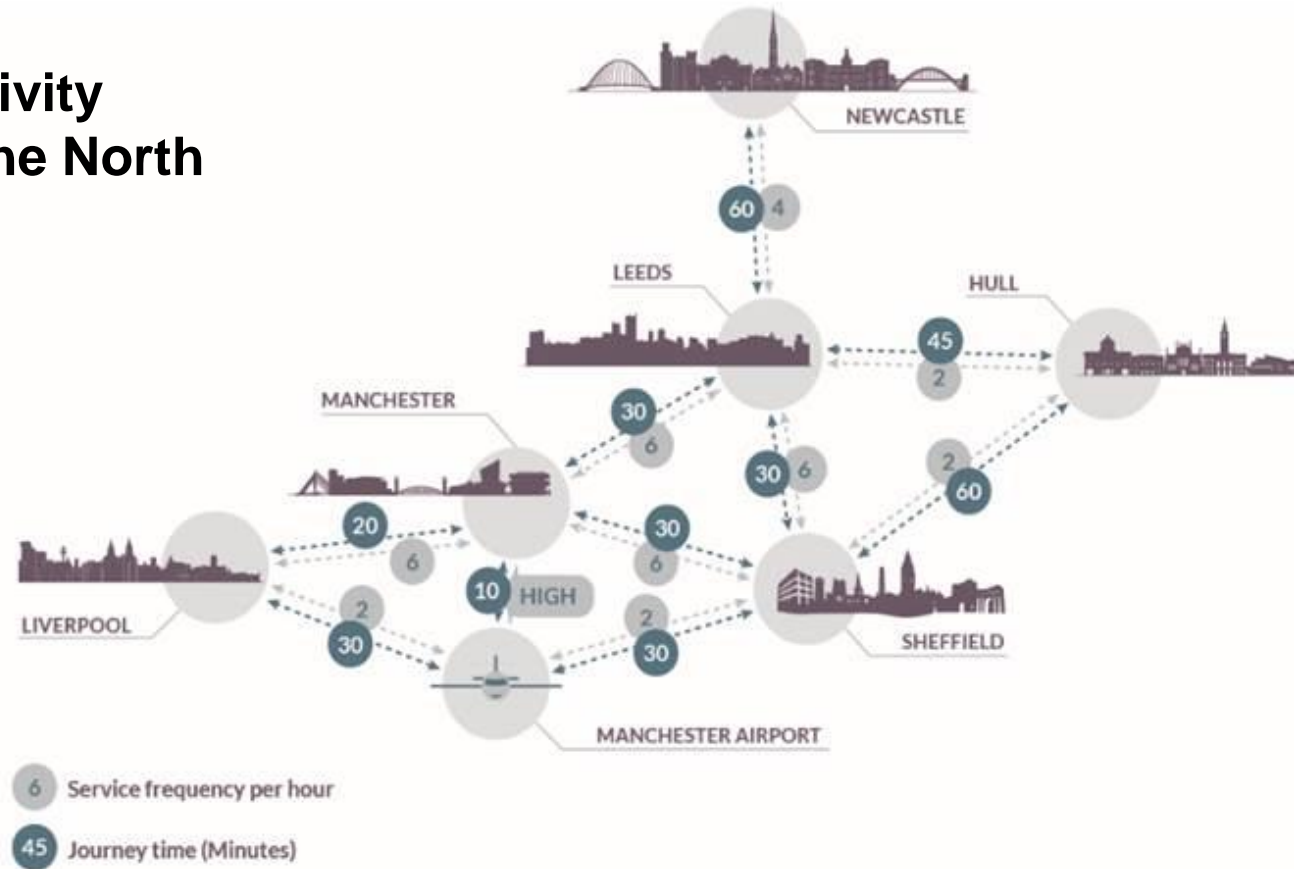
Source: Centre for Cities



**LIVERPOOL  
CITY REGION**  
COMBINED AUTHORITY

# NORTHERN POWERHOUSE RAIL

**Better connectivity  
would shrink the North  
of England**





**LIVERPOOL  
CITY REGION**  
COMBINED AUTHORITY

# Freight and Logistics – Key Opportunity for Northern Powerhouse

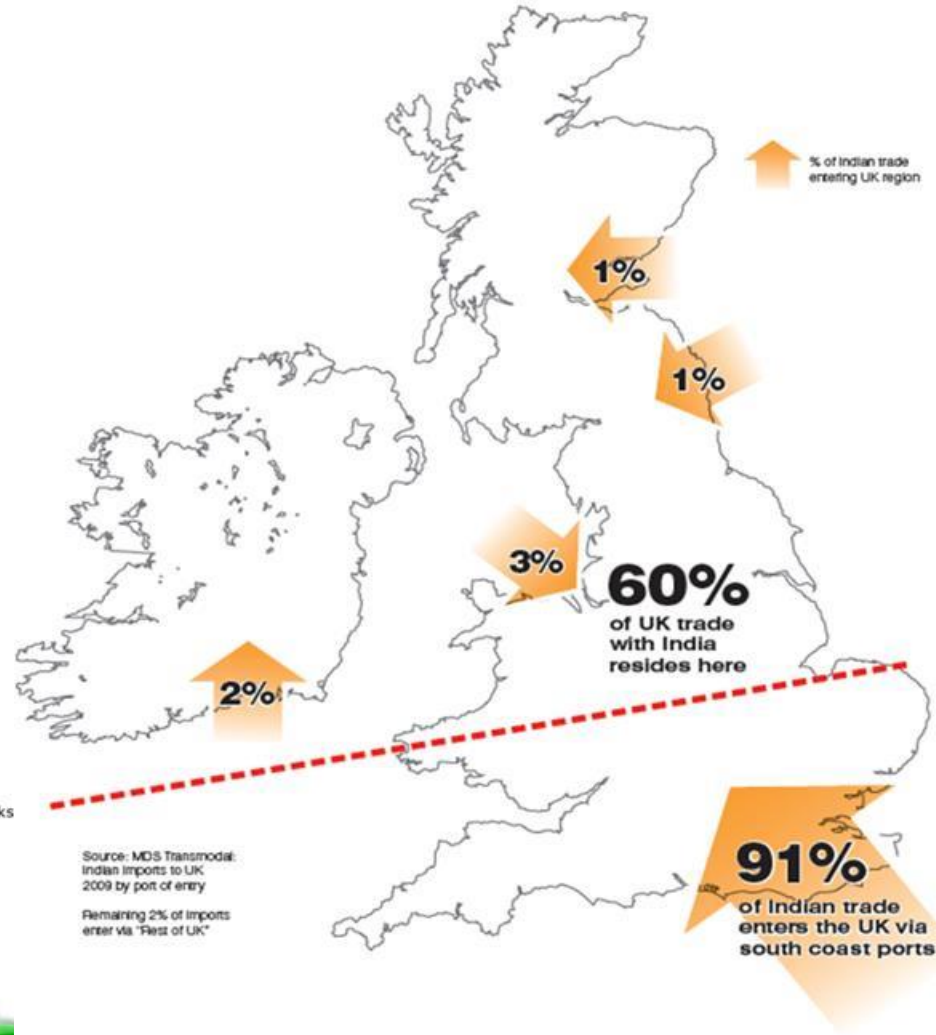
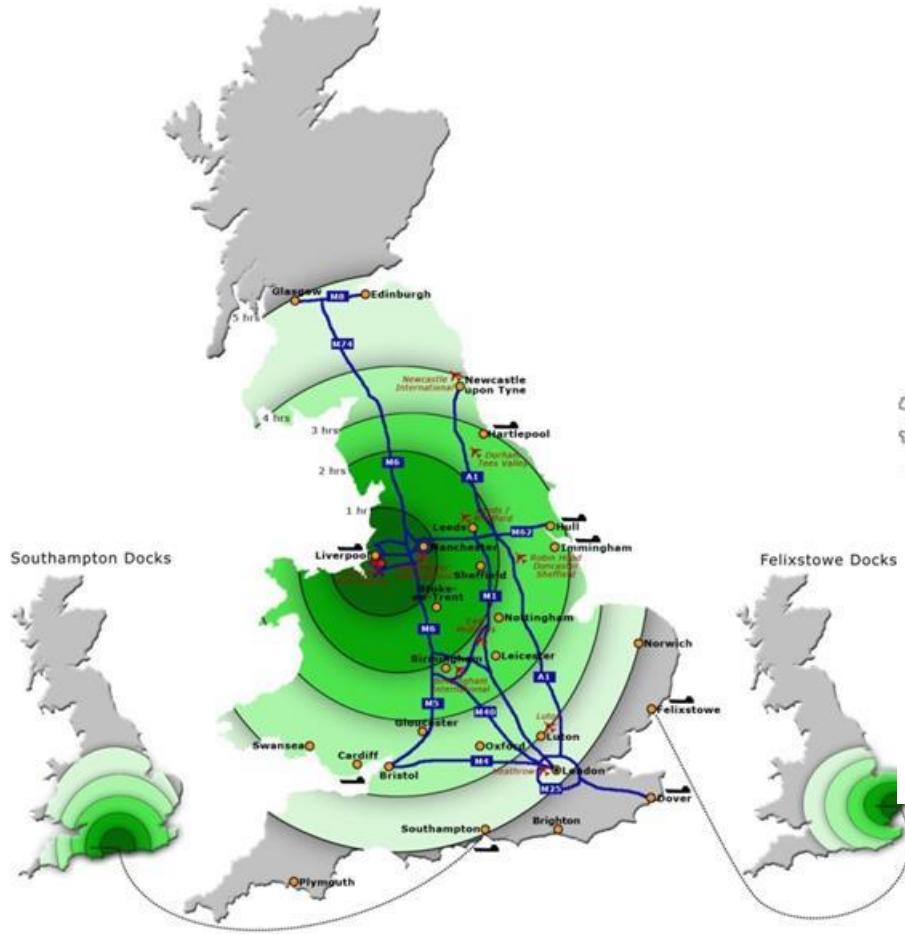
- Over 90% of Indian imports enter via Southern England - 60% consumed North of midlands
- Global (& UK) logistics industry changing – Liverpool ideally placed to take opportunities
- £340m ‘Liverpool 2’ deep water terminal expansion
- Increases port capacity by factor of three
- National benefits
  - Remove 150m HGV miles p.a.
  - “Decongest” the Midlands and SE
  - Increased GDP
- Northern Powerhouse Rail capacity integral





# LIVERPOOL CITY REGION

COMBINED AUTHORITY







**LIVERPOOL  
CITY REGION**  
COMBINED AUTHORITY

# Benefits at LCR Level

- A full, direct North-South HS2 and East-West Northern Powerhouse Rail connection would deliver major economic benefits to LCR



£15  
BILLION  
BOOST TO THE CITY  
REGIONAL ECONOMY

20,000  
NEW  
JOBS

10,000  
NEW  
HOMES

2.9 MILLION  
MORE VISITORS  
WEEKLY AND  
LEISURE