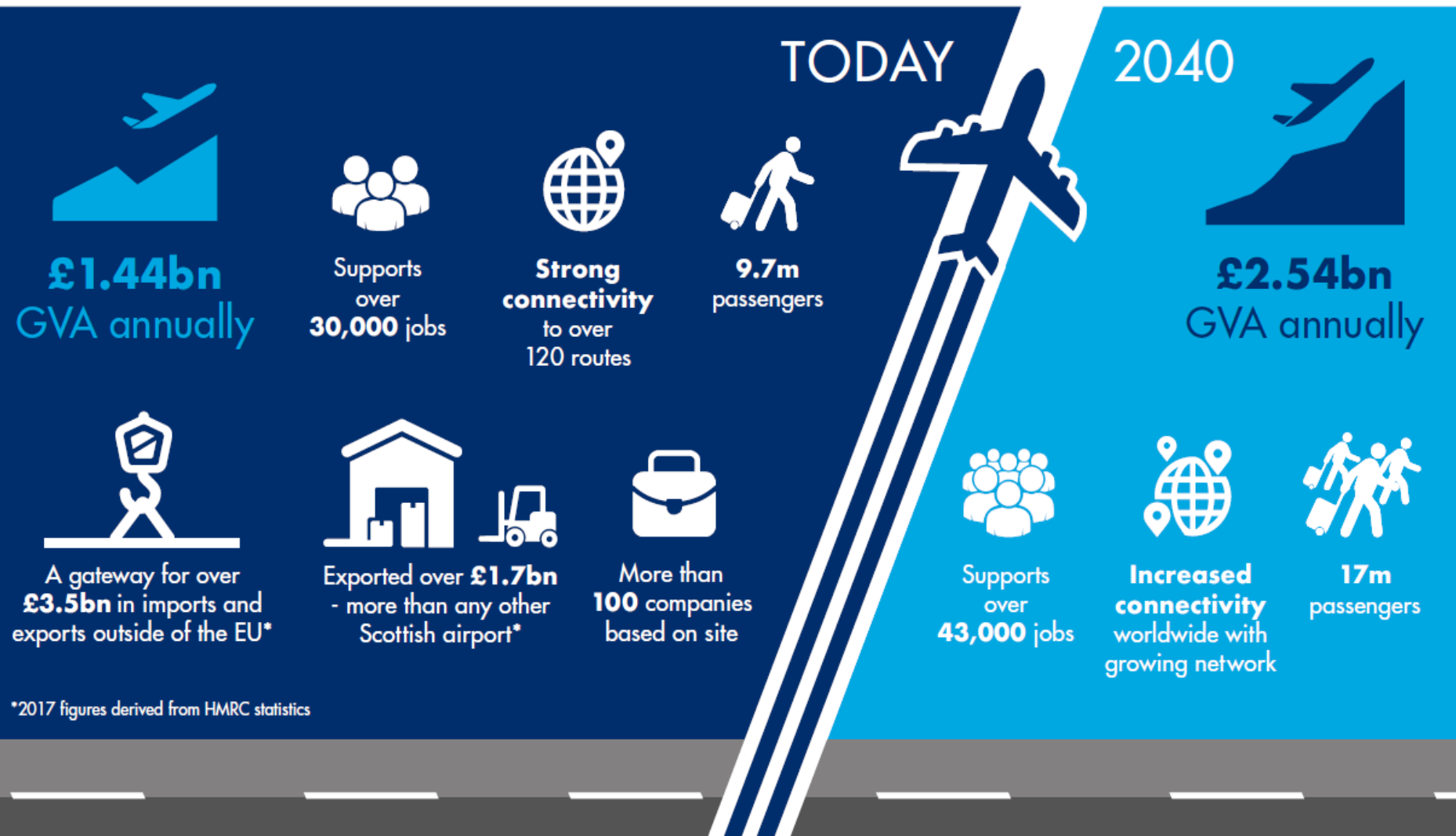


Scottish Transport Summit

Derek Provan
June 2019

GLASGOW AIRPORT - DELIVERING HUGE ECONOMIC VALUE FOR SCOTLAND



COMMERCE FOLLOWS CONNECTIVITY



Airports are drivers of growth

- Quality and reliability of transport is a significant consideration when it comes to investment decisions.
- Connectivity airports provide helps facilitate economic prosperity and wider social inclusion.
- Strong connectivity drives tourism, encourages exports and attracts inward investment.

Partnership working

- Airports can't do it alone.
- We must build on our partnership approach - airports, business community, local and national government.
- Work together to identify target markets and to support new and existing services.



**AIRLINES FLY TO CITIES
NOT AIRPORTS**

INTER-URBAN TRANSPORT NETWORKS



QUEENSFERRY CROSSING



BORDERS RAIL



AWPR



A9 DUALLING

GLASGOW'S TURN?



Questions