

East Midlands Strategic Transport Priorities

Andrew Pritchard





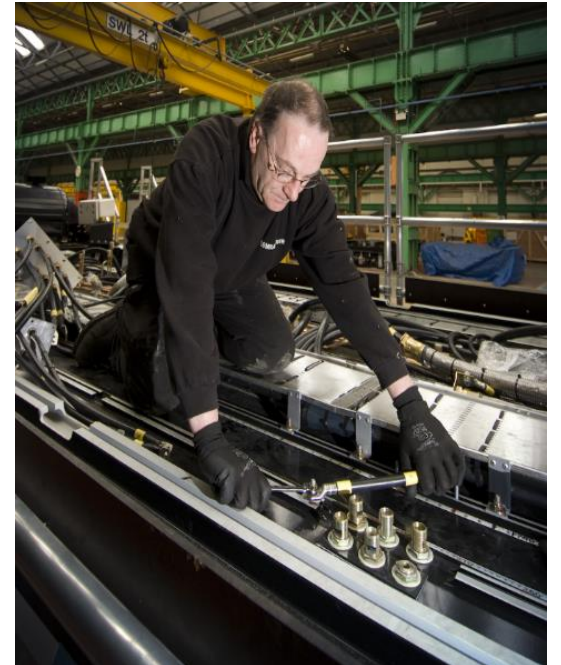
- Membership body for all 46 councils in the East Midlands
- Provides services to improve council performance
- Strategic leadership and a strong regional voice

- TfEM brings together 9 LTAs in the East Midlands under the auspices of East Midlands Councils (EMC)
- Working in partnership with DfT on the East Midlands Franchise
- Collective input into Midlands Connect

- Emerging Sub-national Transport Body for the Midlands
- Published Transport Strategy in March 2017
- Working to prioritise major investment across the Midlands

Transport as an Engine of Growth

- Economic impacts through improved connectivity between places
- Job growth through transport engineering sector
- Without a transport system, we do not have an economy...



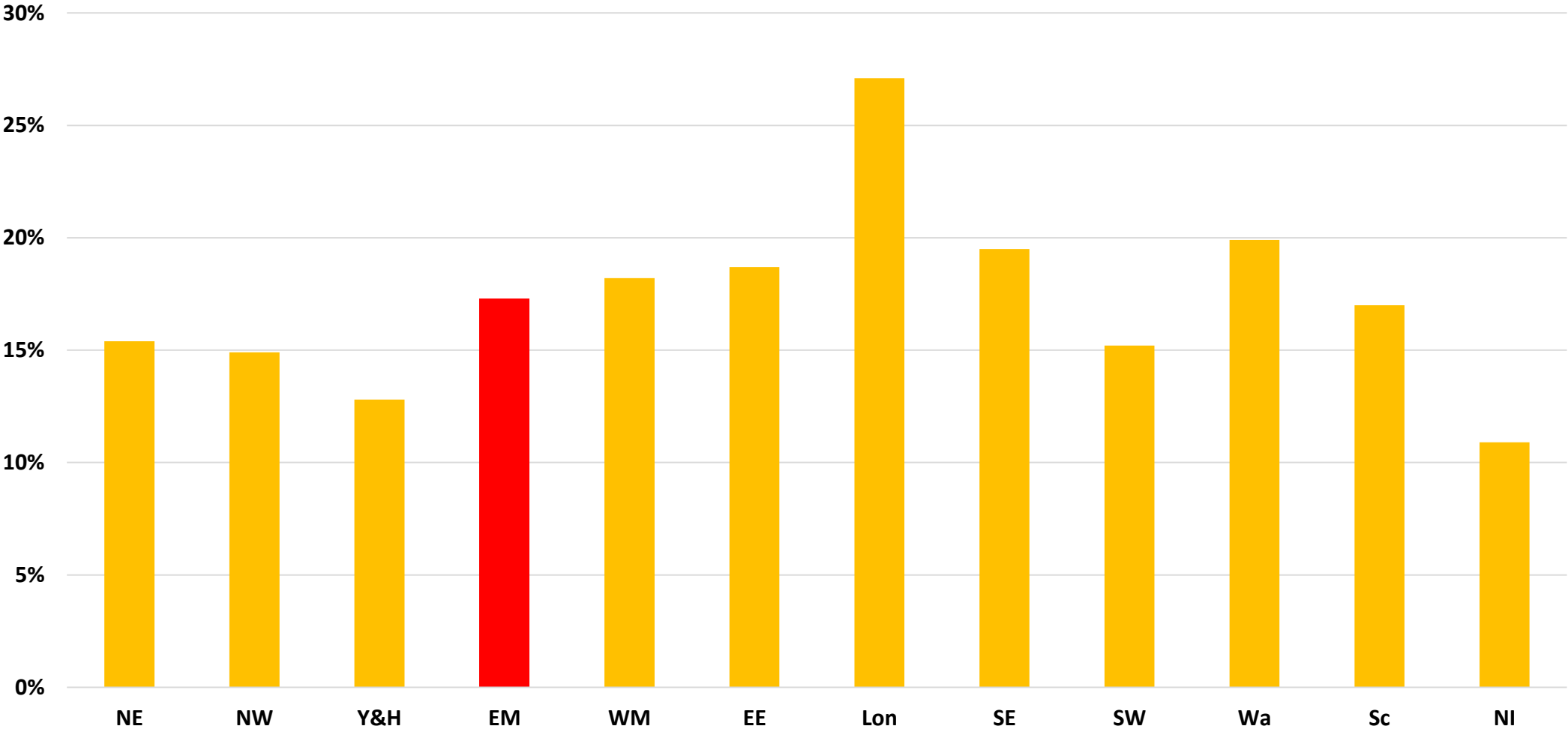
East Midlands Growth: Jobs, People and Homes

- Strong private sector job growth over the last 5 years
- c20% of GVA Exported
- Strong academic network
- EM population likely to rise by half a million to 5 million by 2030
- Biggest growth in university towns & cities - and Corby!
- 400,000 new homes planned over next 20 years



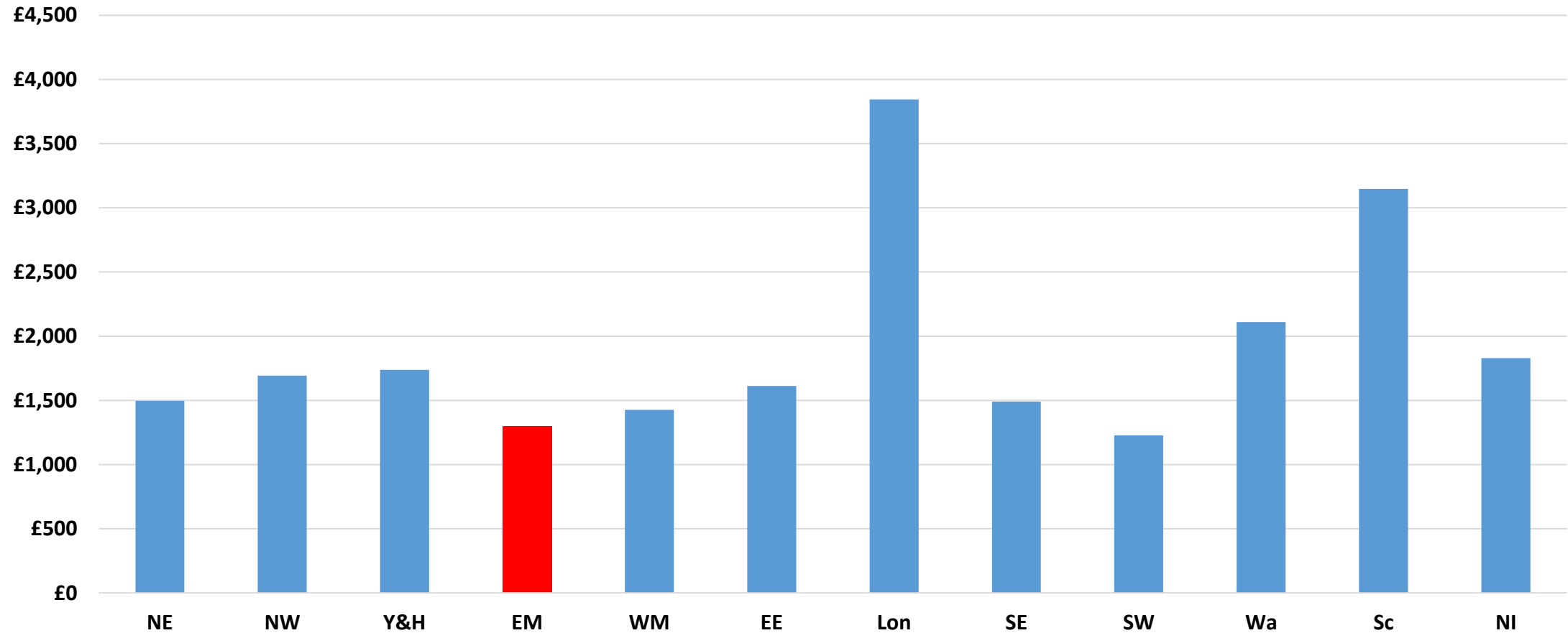
“The East Midlands is a bellwether for the UK economy”

% GVA Growth 2010-2015



Source: <http://researchbriefings.files.parliament.uk/documents/SN05795/SN05795.pdf>

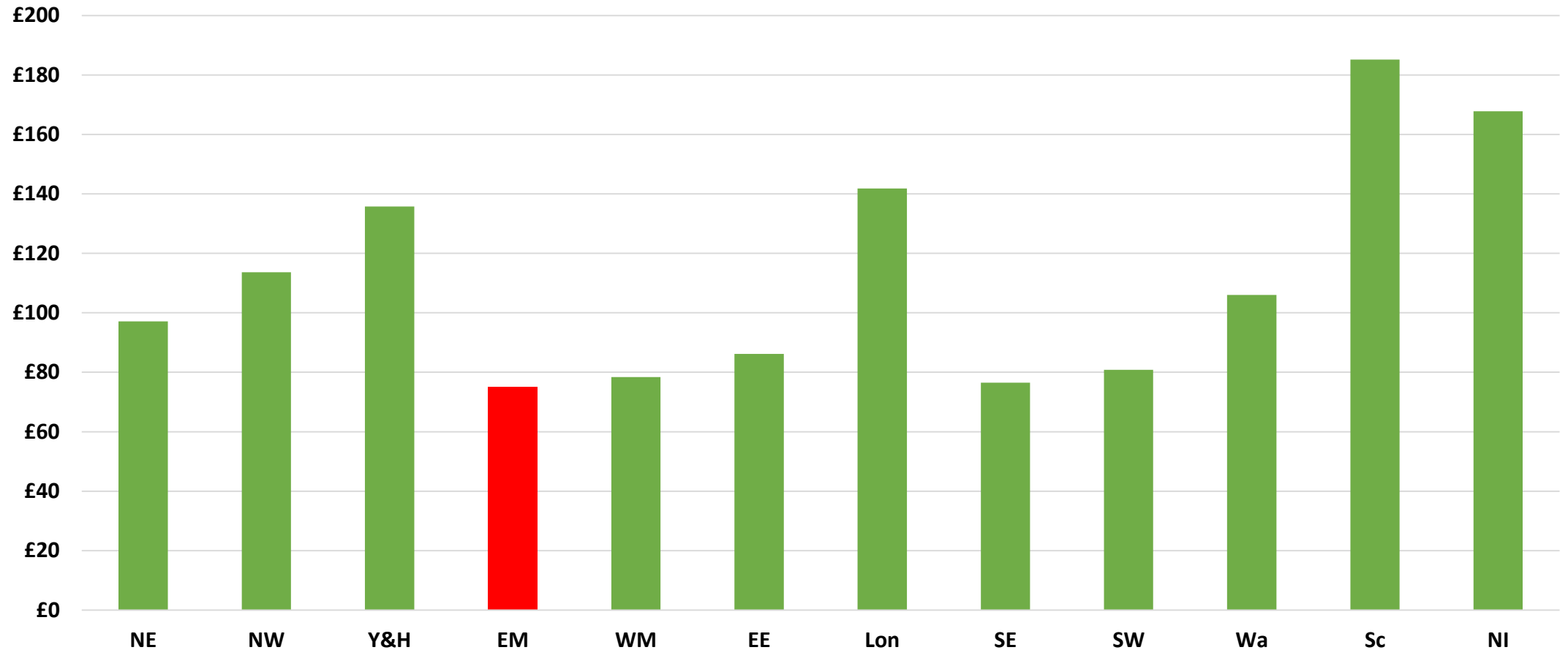
Total Public Investment in Transport (per head) 2010-11 to 2015-16



Source: <https://www.gov.uk/government/collections/public-expenditure-statistical-analyses-pesa>

Cost of Growth 2010-2015

Public Investment (per head) in Transport, per 1% GVA Growth




The need to challenge 'received wisdom' ...

- London has delivered a high levels of GVA growth, but this has been sustained by very high levels of transport investment
- Relatively high levels of transport investment in the devolved nations and the northern English regions does not yet seem to have delivered similar levels of GVA growth
- The East Midlands has delivered the highest GVA growth relative to public investment in transport of any UK region/nation since 2010 – with the West Midlands not far behind
- There would appear to be a economic case for increasing transport investment in the East Midlands as a cost effective way of boosting UK GVA in a post Brexit economy...

TfEM & Midlands Connect Joint Priorities

- Six Joint Strategic Priorities agreed by Midlands Connect and TfEM
- Presented to the Secretary of State by Sir John Peace and Sir Peter Soulsby in 2018
- The basis for an ongoing dialogue with Department for Transport....



Transport for the East Midlands

Midlands Connect
Powering the Midlands Engine

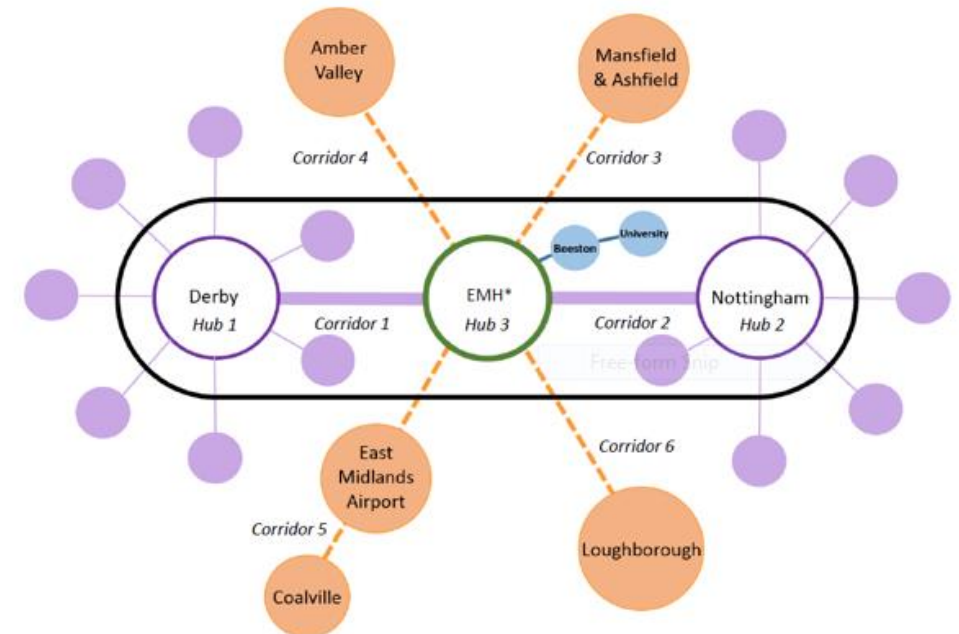
A SHARED VISION FOR THE EAST MIDLANDS

TfEM and Midlands Connect are working together on a common set of key strategic priorities that will help to address the historic underfunding of the East Midlands and support economic and housing growth:

1. Making the most of HS2
2. A Midland Main Line fit for the 21st century
3. Improving access to East Midlands Airport
4. A46 Growth Corridor & Newark
5. A5 Growth Corridor
6. Transforming East-West connectivity

Making the Most of HS2

- Midlands will be the heart of the HS2 Network - 3 new stations and 3 with HS2 connectivity
- EM Hub at Toton, Chesterfield, and Staveley Maintenance Depot
- We are working together to make the case for building Toton early, and to develop the strategic and local transport links that will realise its economic potential



Midlands Main Line fit for the 21st Century

- Working with DfT to develop an incremental approach to electrification of the line between Kettering & Clay Cross
- TfEM working in partnership DfT on the management of the EM Franchise
- Working with our world class local rail industry to ensure the track and new rolling stock can deliver real improvements



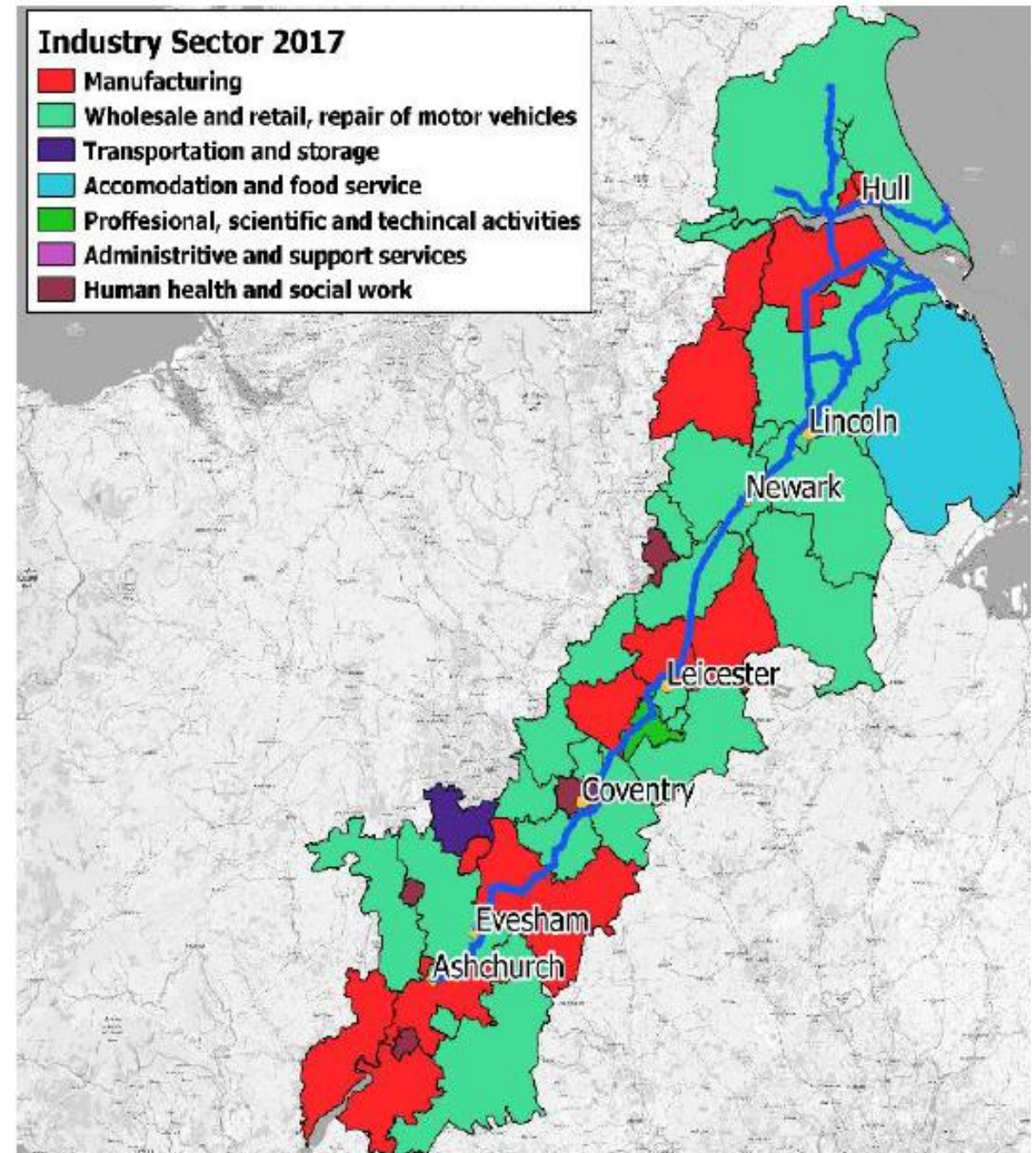
Improving access to East Midlands Airport

- EMA is a major international gateway and economic asset
- 5 million passengers per year and UK's largest dedicated air-freight airport - and plans for major growth
- Adjacent Strategic Freight Interchange will generate 1,000s of new jobs
- But need to improve road and particularly public transport surface access...and links to HS2



A46 Growth Corridor

- 145 mile corridor from the Severn Estuary to Humber ports
- Support key economic sectors including automotive, aerospace, agri-food and textiles
- Huge potential for further economic and housing growth - bigger than CaMKOx!
- Key priorities for improvement: Newark North, SE Leicester and Lincoln to Humber



A5 Growth Corridor

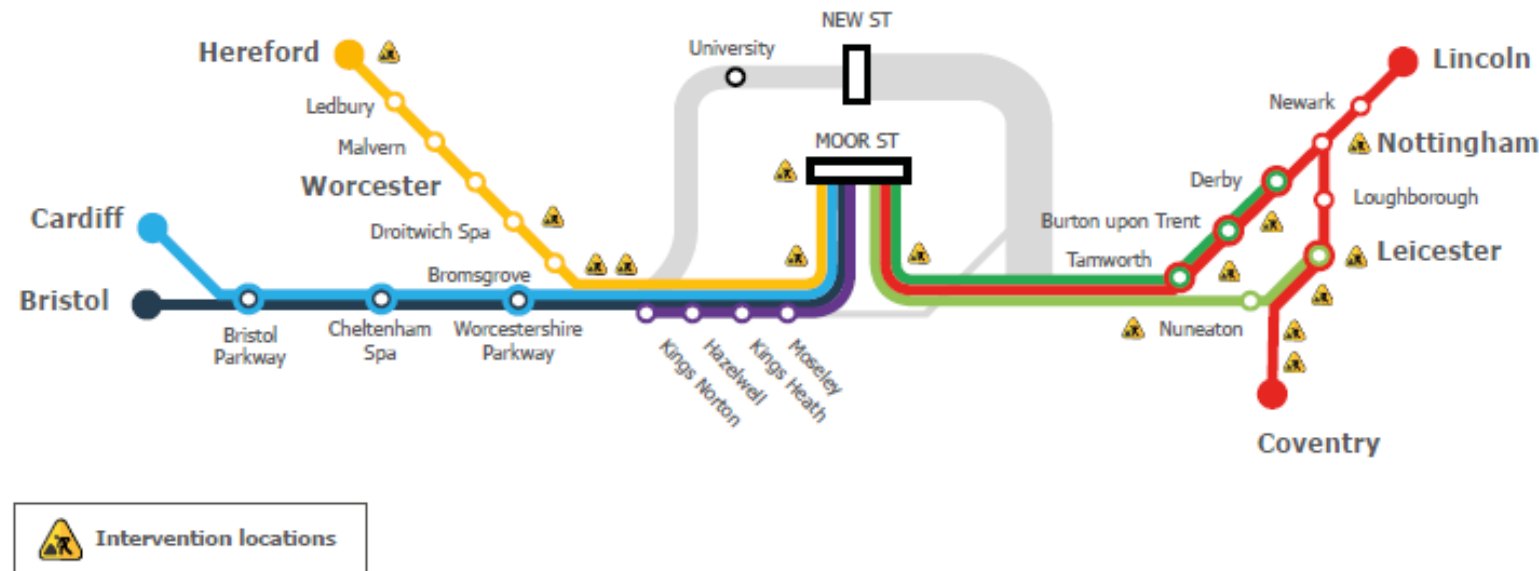
- A5 (Watling Street) an major E-W route – and an alternative to M6
- Key to major employers, particularly freight distribution
- Major housing and employment growth planned along the corridor over next decade
- But route is variable standard, accident prone and frequently congested...
- TfEM working to develop a strategic approach to improvement - particularly between M42 and M69



Transforming East-West Connectivity

- Key UK transport corridors predominately North South
- Poor East West connectivity between midlands cities undermining growth:
 - Nottingham/Derby/Leicester/Lincoln to Birmingham (Rail & Road)
 - Leicester to Coventry (Rail)
- Midlands Rail Hub and Road Hub projects promoting targeted enhancements

Map of interventions



Deal or No Deal...?

- East Midlands has untapped potential for major employment and housing growth
- Addressing historic patterns of under-investment in transport key to unlocking growth and re-balancing the UK economy
- This becomes even more important in a post Brexit world....



Something to watch out for....

“There are deep-rooted inequalities across the UK. These are not inevitable. However we lack the long term thinking and spatial economic plan needed to tackle them. The UK2070 Commission will seek to fill this gap through a national inquiry and debate on the nature of the problems and set out the actions needed to address them.”

Lord Kerlake, October 2018

<http://uk2070.org.uk/publications/>



UK2070
COMMISSION

And Finally...

Any Questions?