

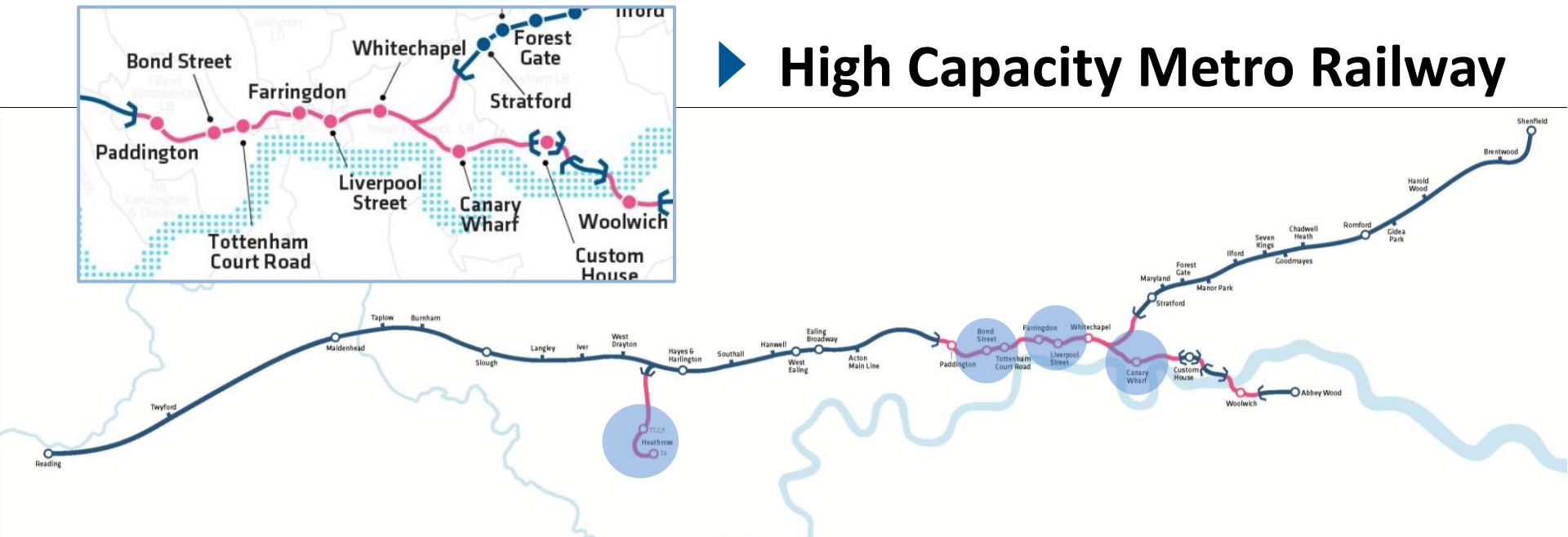
# ◀ Sir Terry Morgan CBE

◀ Chairman, Crossrail

# Crossrail – enabling London to grow



## ► High Capacity Metro Railway



**£14.8bn**  
cost

**£42bn**  
net benefit

**118 km**  
length

**40 (10 new)**  
stations

**24**  
Trains/hour

**200m**  
journeys pa

# The Skills Challenge



Fewer than  $\frac{1}{5}$  workers in the rail sector are under 30 – nearly  $\frac{1}{2}$  are over 45

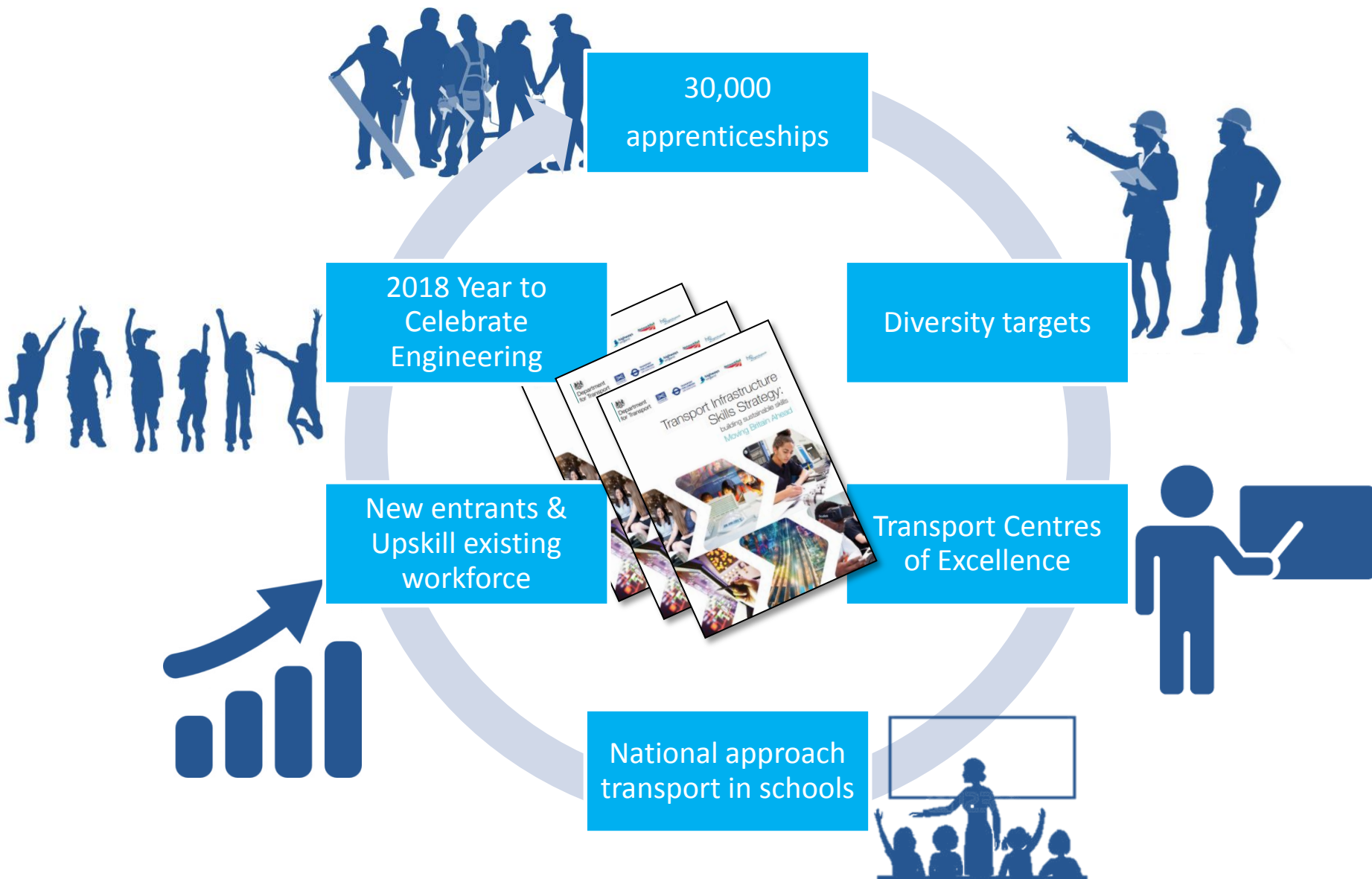


Over 33,000 workers within the transport sector could retire by 2020





# DfT Skills Strategy



30,000  
apprenticeships

Diversity targets

Transport Centres  
of Excellence

National approach  
transport in schools

New entrants &  
Upskill existing  
workforce

2018 Year to  
Celebrate  
Engineering

# National College for High Speed Rail



DONCASTER CAMPUS



BIRMINGHAM CAMPUS